

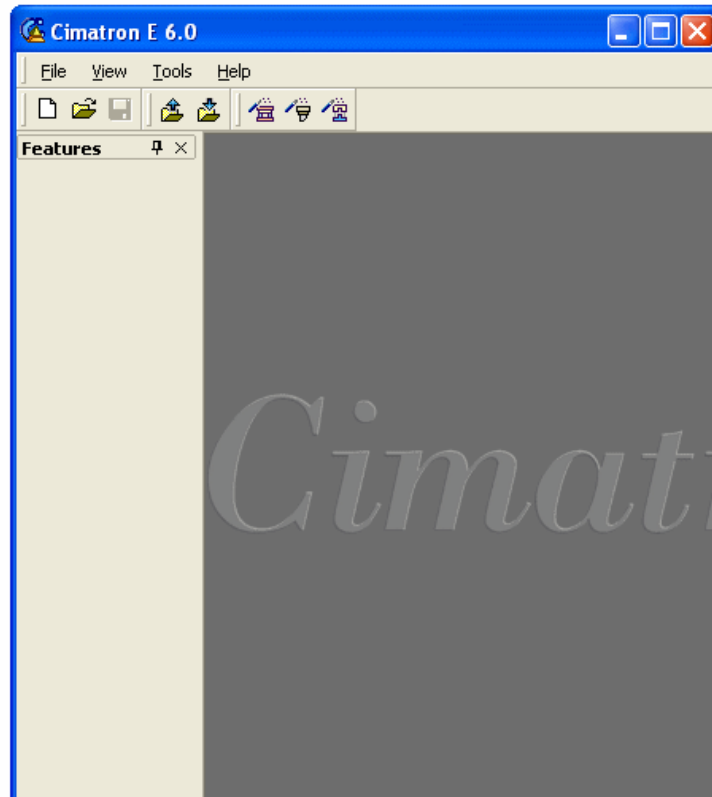
## Launching Cimatron E

### Launch

On the Desktop, double click the Cimatron E Icon to Launch Cimatron E.



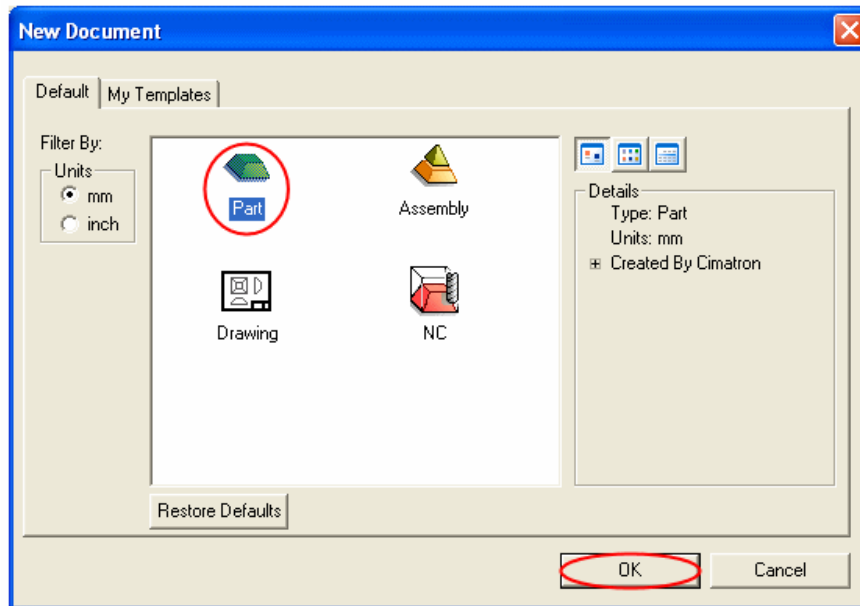
The entry window appears:



## Creating a New Part

Press the [New Document icon](#) from the Icons Toolbar, or select **File/New Document**.

The following dialog box now appears:



There are four document types within Cimatron E:



Part



Drawing



Assembly

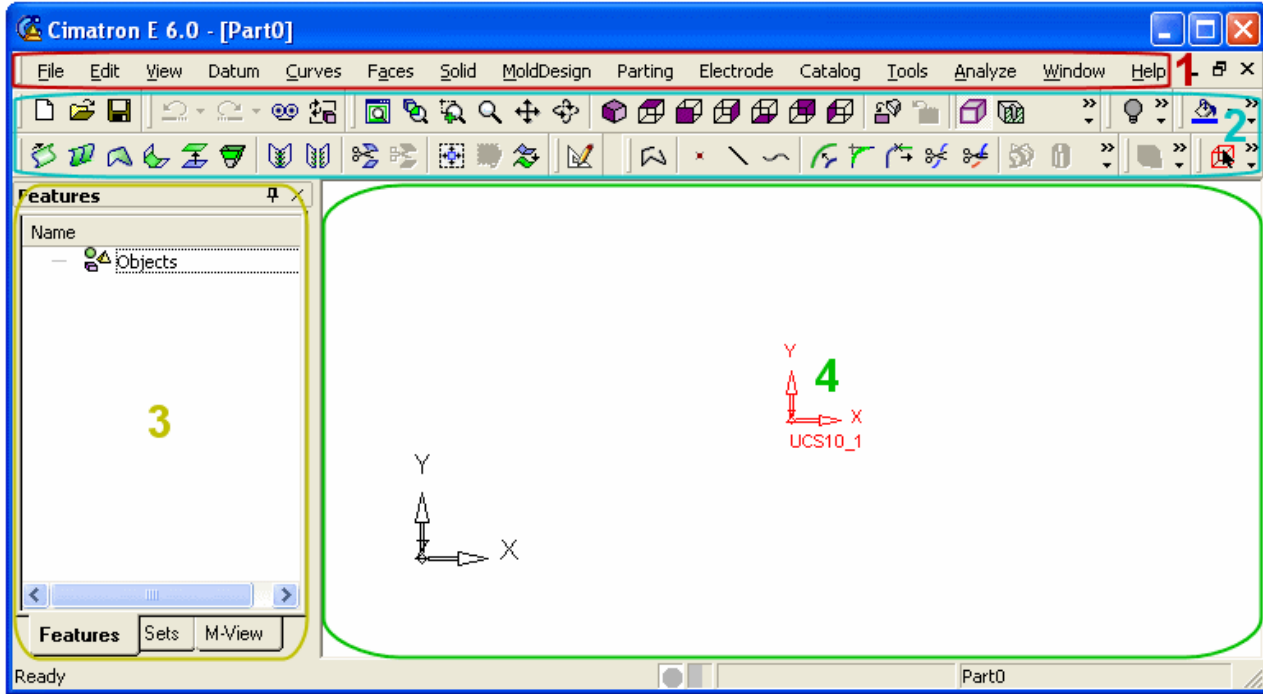


NC

From the above menu select Part and click **OK**.

## Cimatron Environment

In the picture below the **Menu Bar (1)**, **Icons Toolbar (2)**, **Features Tree (3)** and **Display Area (4)** appear.



The screen above is specific to the Part environment. For Drafting, Assembly and NC documents, different environments appear.

## Mouse Function

---



The **Left** Mouse Button is used as the **SELECT** and **UNSELECT** mechanism.



The **Middle** Mouse Button is used to **EXIT**:

- 1) A menu or a sub menu
- 2) A completed activity

It can also be used to **CONFIRM**:

- 1) The selection of an activity
- 2) The selection of entities



The **Right** Mouse Button is used to **DISPLAY** the **SUB-MENU** within a function.



Pressing the **Middle** and the **Right** Mouse Buttons together, displays the **SCREEN OPTIONS** popup menu.



Pressing the **Left** and the **Middle** Mouse Buttons together, rejects the last action i.e. acts as UNDO.



Pressing the **Left** and **Right** Mouse Buttons together, displays the [Selection Filter](#).

---

### More mouse function:

When using the mouse in conjunction with the Ctrl key, the Zoom, Pan and Rotate functions can be called upon:

- Ctrl and the left mouse button - Rotate
- Ctrl and the middle mouse button - Pan
- Ctrl and the right mouse button - Zoom